



# A Smarter View of Rail

Fast-Track Your Operations on the Esri® Platform







# The Power of Knowing Where

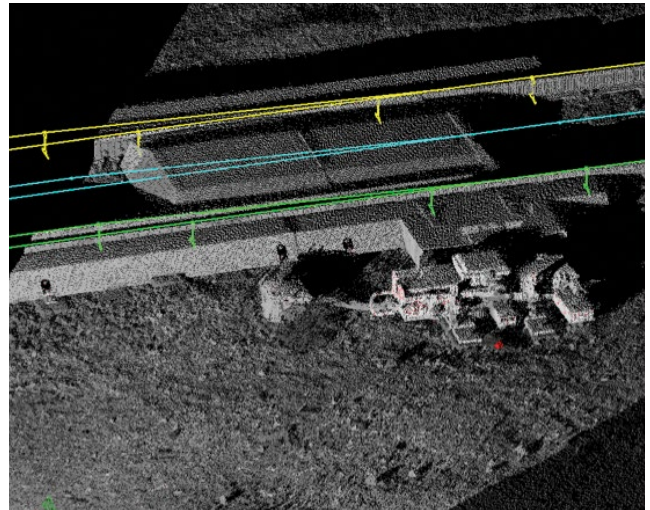
Esri's location platform transforms your rail organization. With ArcGIS®, you gain powerful visualization tools and advanced spatial analytics. With these, you improve railway operations and get the most out of your infrastructure. You maximize throughput, easily monitor safety, and protect the environment.

You do it all on one platform. ArcGIS.



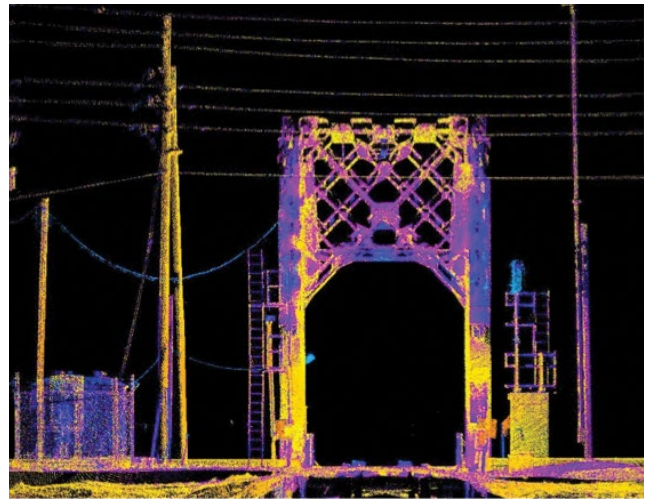
## Strengthen Asset Management

Gain a comprehensive data view. The ArcGIS platform helps you collect, build, and manage a precise rail inventory. Analytics helps you understand asset locations, their condition, and performance, so you make stronger real-time decisions. By bringing this information together from stand-alone enterprise business systems, you can deliver powerful, data-driven visuals to people who need them. Track-testing data can be combined with other information to prioritize maintenance and capital investments. You can even supplement real-world views with schematics. In short, you keep everyone—from field technicians to boardroom executives—updated with the latest information.



## ArcGIS Strengthens

- Crew Tracking
- Data Collection
- Mobile GIS Access
- Lidar Visualization
- Track-Testing Analysis
- Schematic and Real-World Views

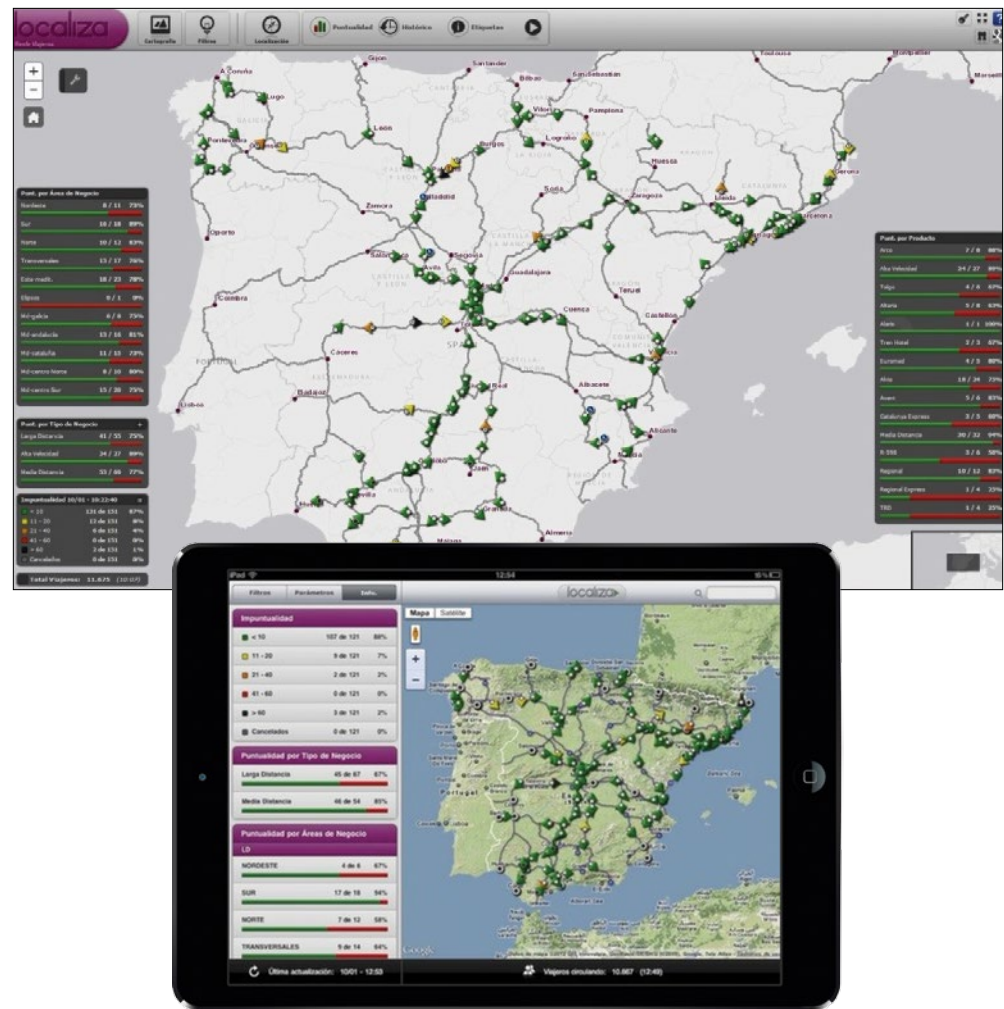






## Achieve Peak Performance

A full view of your information gives you what you need to optimize performance. The ArcGIS platform pulls information from across your enterprise systems into one comprehensive data view. It maximizes your information value by extracting location relationships. So you can make stronger decisions based on asset conditions, weather information, delay locations, service disruptions, and more. You can dispatch safety and maintenance crews in real time. Your performance peaks, and your delays drop. That's the power of Esri's collection, management, and analytical tools.



## Ensure Safety and Security

Passengers and cargo are both precious. Secure the safety of both. Geographic information system (GIS) technology allows you to visualize events as they unfold. So you have greater insights to respond faster to freight emergencies, such as derailment and spills. And you can protect passengers with easy monitoring of urban stations and travelers' activity, as well as your entire network. Safe, efficient operations depend on strong real-time information. Access what you need to know now to preserve your system integrity.



## Manage Real Estate and Right-of-Way

Make property management easy. ArcGIS helps you know your boundaries—including what you own and what you don't. So you take responsibility for only what falls into your right-of-way. Make stronger decisions about vegetation management, taxation, and the area around your switches, signals, and other infrastructure.



## Protect the Environment

Your railway teams need to view their full surroundings. An ArcGIS platform lets you understand environmental constraints. You can predict flood impacts and track spills more easily. You'll stay proactive with faster response to live events, thanks to operational views that pull valuable internal and external data feeds. You become an environmental steward.



## ArcGIS Helps You Manage

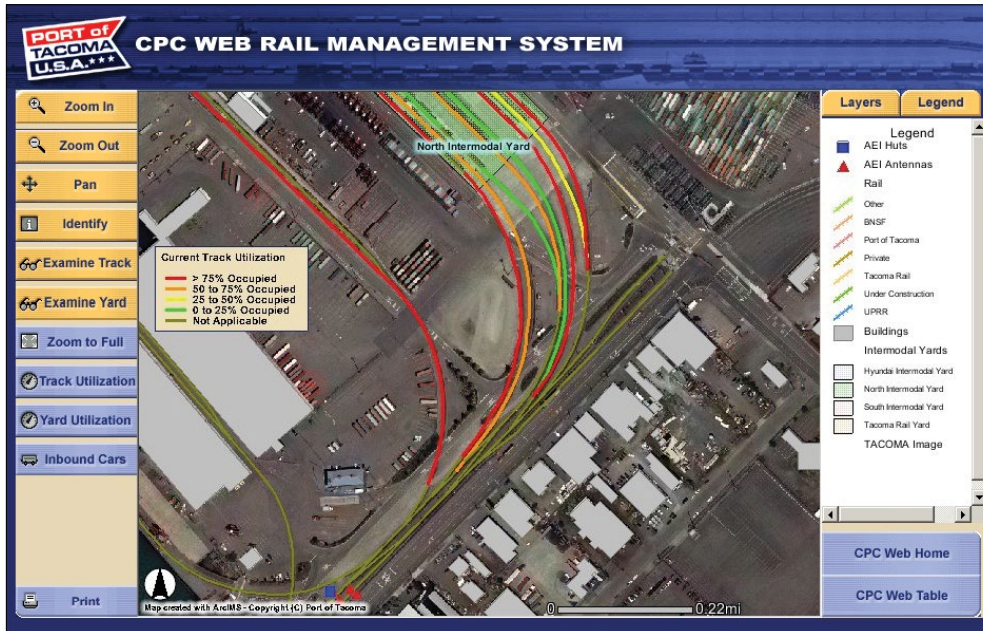
- Property Taxes
- Vegetation
- Injury Response
- Communication Equipment





# Optimize Intermodal Activity

Track and monitor all your rolling stock to optimize intermodal movements. With a location platform, you identify your most efficient intermodal processes. Spatial analysis lets you visualize available assets and capacity. So you save time and money by moving containers faster—from vessel to train and train to truck.



## Maintain Customer Information and Marketing

Stronger messaging helps you connect with customers. Make schedules public, including estimated train arrivals. Web maps and downloadable consumer apps based on the ArcGIS platform give your customers exactly what they need to know, on any consumer device. Esri offers you a variety of templates for easy app configuration. Meanwhile, perform customer prospecting, such as by analyzing catchment areas, so you provide the services that best meet your customer demand.



## Start Your Journey with Esri Today

Learn how leading railways worldwide maximize efficiency through information intelligence. Esri experts are standing by to talk with you today. Visit us online to fast-track your GIS journey.

Learn more at [esri.com/rail](http://esri.com/rail).



Understanding our world.

Esri inspires and enables people to positively impact their future through a deeper, geographic understanding of the changing world around them.

Governments, industry leaders, academics, and nongovernmental organizations trust us to connect them with the analytic knowledge they need to make the critical decisions that shape the planet. For more than 40 years, Esri has cultivated collaborative relationships with partners who share our commitment to solving earth's most pressing challenges with geographic expertise and rational resolve. Today, we believe that geography is at the heart of a more resilient and sustainable future. Creating responsible products and solutions drives our passion for improving quality of life everywhere.



## Contact Esri

380 New York Street  
Redlands, California 92373-8100 USA

1 800 447 9778  
T 909 793 2853  
F 909 793 5953  
[info@esri.com](mailto:info@esri.com)  
[esri.com](http://esri.com)

Offices worldwide  
[esri.com/locations](http://esri.com/locations)

Copyright © 2015 Esri. All rights reserved. Esri, the Esri globe logo, ArcGIS, @esri.com, and esri.com are trademarks, service marks, or registered marks of Esri in the United States, the European Community, or certain other jurisdictions. Other companies and products or services mentioned herein may be trademarks, service marks, or registered marks of their respective mark owners.