



Industries ▼

Products ▼

Support & Services ▼

About ▼

Community ▼

[Sign In](#)



◀ GIS for Utilities and Communications

# Electric

Main

Distribution

Transmission

Generation

# Get your site right.

Fuel your operations with the power of spatial analysis. Esri can help you find the best places to build a new facility, map your current facilities, and manage nearby environmental factors, such as weather conditions and economic variables. Track developments in current and potential generation sites in real time, and share with your team for faster collaboration.

"We were able to collect data on more than 10 million potential sites in a matter of hours—a process that traditionally would've taken years."

Ryan Taylor, GIS Administrator, Kerr Wood Leidal (KWL)

# Benefits

## Visualize

Make internal and external datasets talk to each other through the common denominator of location.

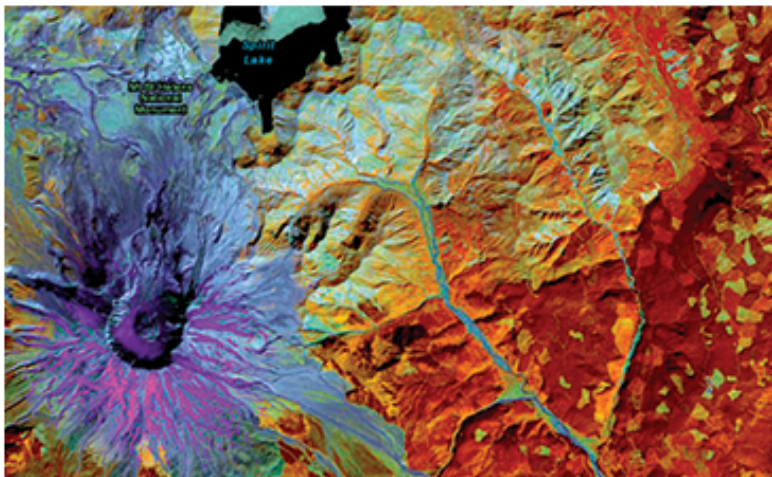
## Analyze

Determine the next best place to site a new solar farm, wind farm or generation plant.

## Collaborate

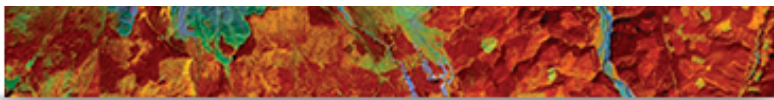
Drive collaboration internally and with your community when your plans are based on intelligent analysis.

# Solutions



## ArcGIS Spatial Analyst

Map and analyze the effects of the sun, accounting for how daily and seasonal shifts of the sun angle, along with variations in elevation, orientation (slope and aspect), and shadows cast by topographic features, affect the amount of incoming solar radiation.



Learn more about ArcGIS Spatial Analysis.

## ArcGIS for Facilities

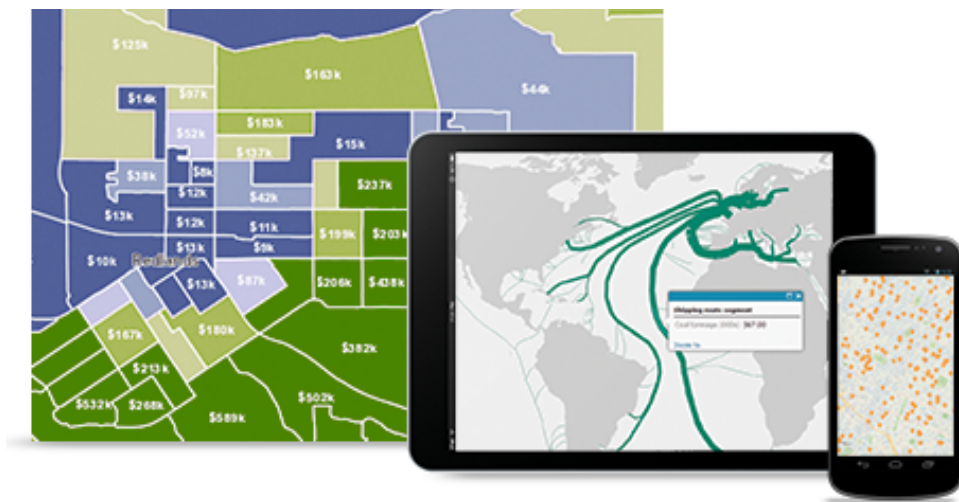
Effectively manage your power plant buildings and facilities. Manage assets including land, infrastructure and office space. Provide a safe environment for building inhabitants through better allocation of resources and ensuring compliance.

Find out more about ArcGIS for Facilities.



ArcGIS Online





Collaborate with your team to pull the right generation sites out of your data. Mine your files spatially to achieve the biggest return on investment. Share key findings and get colleagues' feedback so you collaborate faster and from any device.

Get online today.

## Success Stories

- Mainstream Renewable Power Reduces Risk Building Wind and Solar Plants
- DONG Energy Integrates Wind Power into the Smart Grid
- BC Hydro Unlocks British Columbia's Hydropower Potential
- Arizona Research Team Sites Solar by Using Lida
- Los Angeles County Calculates Solar Potential and Cost Savings

Get the latest energy news delivered directly to you.

Sign up Today ➔

Esri Home » Industries

Follow Us



Industry Info

- Industry Newsletters
- Esri Insider Blog
- Esri Nonprofit Program
- Enterprise License Agreements

Products

- ArcGIS
- Data
- Location Analytics
- All Esri Products

Services

- Professional Services
- Project Services
- Implementation Services
- Premium Support Services

Partners

- Search Partner Directory
- Hardware Promotions
- Learn About Partners

Understanding GIS

- What Is GIS?
- Map Book Gallery
- Video Library

[Contact Us](#) | [Privacy](#) | [Legal](#) | [Site Map](#)

