



[Sign In](#)

[Industries](#) ▼

[Products](#) ▼

[Support & Services](#) ▼

[About](#) ▼

[Community](#) ▼



 GIS for Transportation

Roads and Highways

Main

Planning

Operations

Maintenance

Safety

Build a smarter, safer infrastructure.

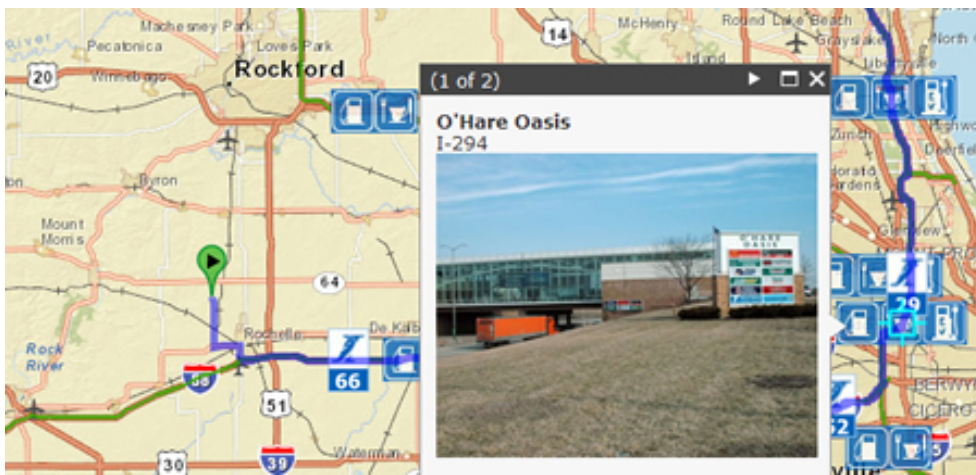
As a transportation professional, you need the most cost-effective tools to manage physical assets, human resources, and office and field operations. GIS can help you plan, monitor, and manage strategic infrastructure more effectively. Use the location power of your data to determine capacity enhancements, improve operations, and identify the most strategic investments for maintaining your transportation infrastructure. GIS can make your stand-alone systems work smarter by connecting them, allowing you to unlock the power of your information systems. Plan a smarter infrastructure today.

"ArcGIS Online has created first-ever relationships and strengthened existing relationships. Together, we can view information and discuss it in ways we have never done before."

Utah DOT Director of Planning John Thomas

Insights

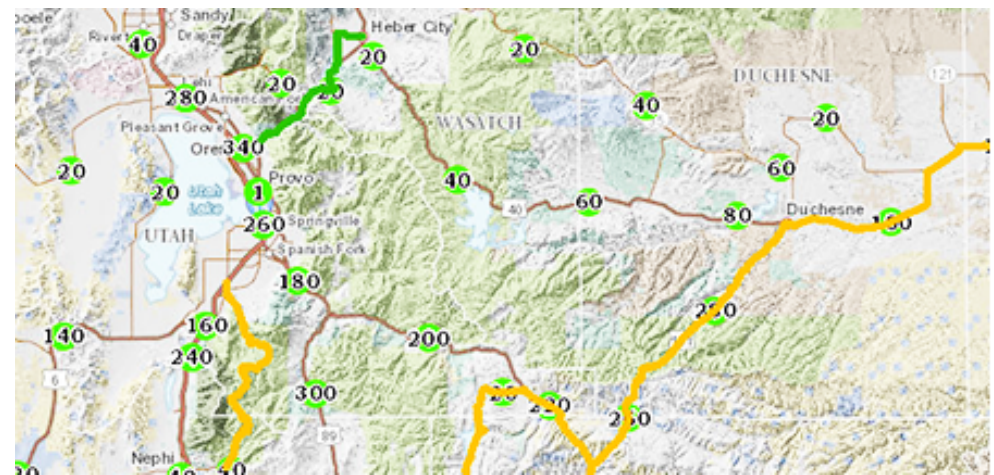
More →



Illinois Takes the Toll Out of Tollways with Online Map

Paying your missed tolls in Illinois just got easier, thanks to the Department of Transportation's public-facing missed-toll map. Now you can hop online, estimate your dues, and pay promptly to avoid extra fees.

[Read more](#)



Utah DOT's Data and Planning Tools Provide a Guide to the Future and Power of Network-Level Asset Data

Utah's DOT won acclaim from the federal DOT for its web-based GIS initiative. The UPlan program pulled formerly hoarded data out of the state's divisional silos and transformed how efficiently the department acts on data.

[Read more](#)



Idaho Transportation Department Connects Field Crews with ArcGIS Online

To connect field crews across Iowa's many remote landscapes, the Iowa Transportation Department (ITD) unified. In a two-phase rollout of mobile technology, the department reduced paper waste and error and enhanced communication across spectacular mountains, gorges, and nine national forests. [Read more](#)



Michigan DOT Avoids Costly Reviews with Lane Mile Inventory [PDF]

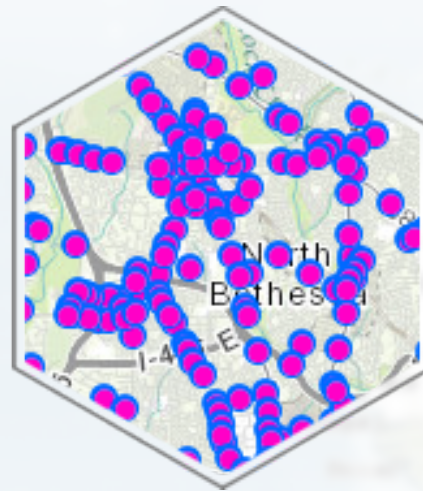
Michigan Department of Transportation (DOT) solves the riddle of accurate lane-mile totals amid ongoing projects. Its innovative Lane Mile Inventory (LMI) simplifies cost-per-lane-mile comparisons and facilitates internal and contractor communication. [Read more](#) [PDF]

Interactive Demos



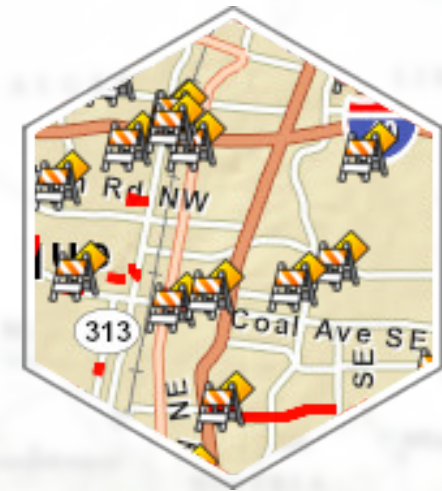
Going Out in New Zealand?
Check the Traffic.

[Begin Demo](#)



Counting Cars. And Cyclists.
And Walkers. In Real time.

[Begin Demo](#)



Know before You Go:
Construction Map

[Begin Demo](#)

Community & Events

[View All Events](#) ➔

Esri Community

Stay in touch with others in the transportation industry who are interested in GIS and location analytics. Join the conversation at [GeoNet](#).

[Join the Discussion](#)



Transportation Research Board

January 11 – 15, 2015
Washington, DC



EuropeanRoads

February 11 – 12, 2015
Lisbon, Portugal



GIS-T

April 19 – 22, 2015
Des Moines, Iowa



Intelligent Transportation Society of America Symposium

March 26 – 27, 2015
Long Beach, California

Partners & Solutions

[Explore Partner Directory](#) →

Esri is proud to team up with leading organizations in the roads and highway industry to bring the absolute right solution to you.



DTS leads in GIS-based asset management and transportation planning and data collection.

[Read more](#)



Transcend Spatial specializes in leveraging GIS-based, customized transportation applications that meet specific business processes.

[Read more](#)



GeoDecisions has been in business for more than 25 years, and has offices in the US and the UAE.

[Read more](#)



PMG offers a complement and software services for T and GIS.

[Read more](#)

Have a Question?

Ask an Expert

An Esri representative is ready to help. Send us your question and we'll make sure to respond promptly. We have industry experts to help you learn more about how to solve problems and add value with Esri. We can also assist with product, pricing, and technical questions.

First name

Last name

E-mail

Phone

What do you need help with?

Organization

Twitter

Message

Send

Not sure who to contact? Call: 1.800.447.9778

Follow Us:       

Esri Home » Industries

Follow Us



Industry Info

- Industry Newsletters
- Esri Insider Blog
- Esri Nonprofit Program
- Enterprise License Agreements

Products

- ArcGIS
- Data
- Location Analytics
- All Esri Products

Services

- Professional Services
- Project Services
- Implementation Services
- Premium Support Services

Partners

- Search Partner Directory
- Hardware Promotions
- Learn About Partners

Understanding GIS

- What Is GIS?
- Map Book Gallery
- Video Library

[Contact Us](#) | [Privacy](#) | [Legal](#) | [Site Map](#)