



[Sign In](#)

[Industries](#) ▼

[Products](#) ▼

[Support & Services](#) ▼

[About](#) ▼

[Community](#) ▼



← [GIS for Transportation](#)

Ports and Maritime

Main

[Asset Management](#)

[Operations](#)

[Sustainability](#)

[Security](#)

Smart maps for smooth sailing.

Port operators and maritime administrators face increased demands for efficient operations. You need to manage assets and keep your harbors secure. Meanwhile, there's the maritime environment to consider. Esri offers a complete platform that lets you integrate all this information and more. With Esri location-aware solutions, you can control operations, improve decision-making, and keep the bottom line afloat.

"Our vision of creating a common operating picture with a geographic perspective gives everyone the information necessary to do their jobs in the best way they can."

Malcolm Meikle, GIS Coordinator for the San Diego Unified Port District

Insights



San Diego Port Authority Gets a Common Operating Picture

San Diego Port Authority expanded the power of each employee through greater access to critical intelligence. With better visuals illustrating operations, the whole port authority runs and collaborates more smoothly.

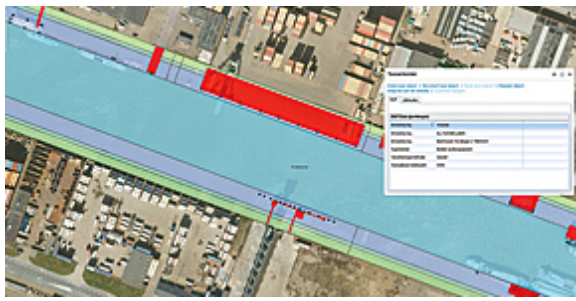
[Read more](#)



Los Angeles Tracks a Dynamic Environment

The Port of Los Angeles leads North American seaports with 7,500 acres. Recently it launched a system to aggregate its critical data and serve this up to all divisions. Today, more than 1,200 employees can access and update GIS data.

[Read more](#)



Port of Rotterdam Launches Groundbreaking Management Platform

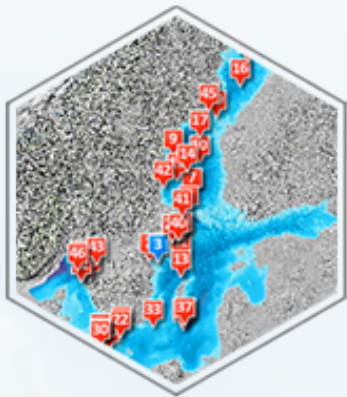
In just three mouse clicks, Port of Rotterdam employees can access information about any asset. With more than 130,000 vessels docked a year, fast information access means instant decision making at the historic gateway that serves 500 million European consumers. [Read more](#)



Protecting the San Pedro Bay Port Complex ^[PDF]

With so many stakeholders adjacent to the Port of Long Beach, security is of utmost importance. With location-smart, real-time software, security director Randy Parsons shares situational awareness across his team. [Read more](#) ^[PDF]

Interactive Demos



The Unknown World of the Ocean Floor

[Begin Demo](#)



The 50 Largest Ports

[Begin Demo](#)



Protecting the San Pedro Bay Port Complex

Randy Parsons, Director of Security for the Port of Long Beach, explains how they achieve situational awareness and better decision making.

Runtime: 2:45

Esri Community

Stay in touch with others in this industry who are interested in mapping and spatial analysis. Join the conversation at [GeoNet](#).

[Join the Discussion](#)

IAPH Conference

June 01 – 05, 2015
Hamburg, Germany



AAPA Port Security Seminar and Exposition

July 22 – 24, 2015
Arlington, Virginia

Make and manage data with ArcGIS for Maritime. Stronger decisions start with a smart solution.



Create and manage maritime information. Analyze your port for informed decision making using Esri products.

[Read more](#)



NorthSouth GIS (NSG) provides geospatial consulting services and off-the-shelf solutions to ports of all sizes globally.

[Read more](#)



With over 200 years of combined experience, Klein Systems Group (KSG) provides technical expertise to make ports more efficient.

[Read more](#)



Analyze hydro and create 3D with QPS software. Fledermaus 2 supports the hydrographic

[Read more](#)

Have a Question?

Ask an Expert

An Esri representative is ready to help. Send us your question and we'll make sure to respond promptly. We have industry experts to help you learn more about how to solve problems and add value with Esri. We can also assist with product, pricing, and technical questions.

First name

Last name

E-mail

Phone

What do you need help with?

Organization

Twitter

Message

Send

Not sure who to contact? Call: 1.800.447.9778

Industry Info

- Industry Newsletters
- Esri Insider Blog
- Esri Nonprofit Program
- Enterprise License Agreements

Products

- ArcGIS
- Data
- Location Analytics
- All Esri Products

Services

- Professional Services
- Project Services
- Implementation Services
- Premium Support Services

Partners

- Search Partner Directory
- Hardware Promotions
- Learn About Partners

Understanding GIS

- What Is GIS?
- Map Book Gallery
- Video Library