



Industries ▼

Products ▼

Support & Services ▼

About ▼

Community ▼

[Sign In](#)



◀ GIS for Transportation

# Ports and Maritime

Main

Asset Management

Operations

Sustainability

Security

# Transform your corporate citizenship.

Good environmental stewardship breeds success. Success for your port means success for the coastline too. Whether you need to restore the coast or monitor the environment, Esri can help you. Use the industry-leading GIS to address the issues, like storm-water management and dredging placement, that matter most. When you build a sustainable information system, you build a sustainable port.

"With Esri, people can see in a geographic context how an agency's goals, strategies, and outcomes are being accomplished."

John Wolf, US. Geological Survey and GIS  
Team Leader of the Chesapeake Bay  
Program

# Benefits

## Monitor

Track environmental health indicators, like water quality and healthy habitats, when you bring a wealth of information into one system.

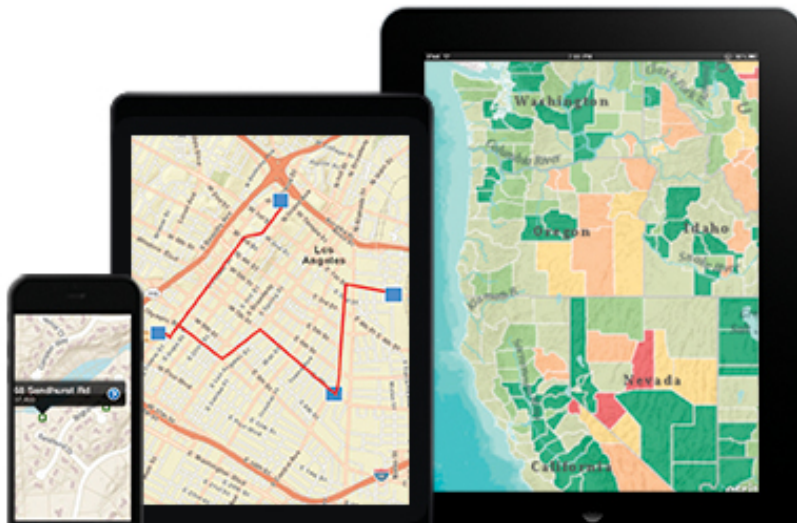
## Analyze

Develop more sustainable strategies when you can see—and understand—the sources of environmental degradation.

## Improve

Take an active, transparent role in your community while communicating your efforts in the regional economy.

# Solutions



## ArcGIS for Mobile

Your field teams can monitor habitats and water quality in real time with Esri's proven suite of mobile apps. Validate existing environmental conditions and ensure that the latest information lives in your databases—not in your field crews' paper notes. See what Esri's no-code applications,

web maps, and templates can do for you.

Explore ArcGIS for Mobile.

## ArcGIS for Maritime

Meet the increasing demand to stay environmentally friendly by mitigating environmental impact. Your data can help you minimize congestion, emissions, and pollution when you visualize it on ArcGIS for Maritime viewers. This pre configured solution helps you take a proactive approach to public transparency while optimizing throughput. Enable your port with better GIS management.

Gain a deeper understanding of your maritime data.





# ArcGIS Platform

Esri transforms your big data into actionable intelligence, so you can see how your port interacts with its environment. Integrate external environmental data with internal data, such as asset information. You'll be able to analyze and communicate, so your port makes stronger decisions toward building a sustainable future.

Get started with the ArcGIS platform.

---

# More to Explore

---

## Brochures and White Papers

- [ArcGIS for Maritime](#) [PDF]

Get the latest in transportation news delivered directly to you.

Sign up Today →

Industry Info

- Industry Newsletters
- Esri Insider Blog
- Esri Nonprofit Program
- Enterprise License Agreements

Products

- ArcGIS
- Data
- Location Analytics
- All Esri Products

Services

- Professional Services
- Project Services
- Implementation Services
- Premium Support Services

Partners

- Search Partner Directory
- Hardware Promotions
- Learn About Partners

Understanding GIS

- What Is GIS?
- Map Book Gallery
- Video Library

[Contact Us](#) | [Privacy](#) | [Legal](#) | [Site Map](#)

