



Industries ▼

Products ▼

Support & Services ▼

About ▼

Community ▼

[Sign In](#)



GIS for Utilities and Communications

Telecommunications

Main

Cable

Wireless

Wireline

Give your data a voice.

By visualizing internal and external data, such as demographics and market trends, geographically you can make smarter decisions about cable, towers, and service coverage. Answer customer questions fast, and scope your next great investment with geographic confidence. Cut the static between you and your data by letting it speak to you directly. Listen to it, save resources, and maximize efficiency.

"We have reduced the time and cost of request-for-pricing response by 60 percent while improving accuracy."

Tom Cox, Senior Developer, SRP Telecom

Insights

More →



Maine Fiber Builds Thousand-Mile Network [PDF]

A company was born to build a fiber network. When free solutions and manual mapping fail, they turn to GIS. Errors drop to less than one-half of one percent.

[Read more](#) [PDF]



INEA Manages Growing Triple Play Network with Digital Mapping

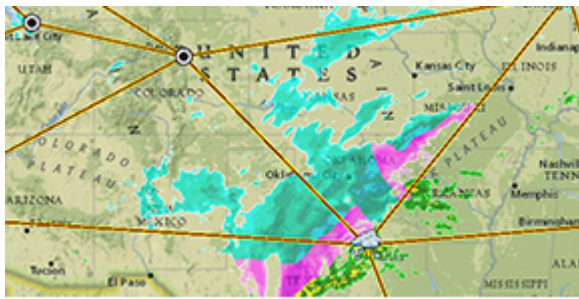
Instant information about available network resources significantly reduces the time Poland's INEA needs for technical diagnosis and design. Plus, it uses GIS to grow dynamically, modernize, and win new customers.

[Read more](#)



Fiber-Optic Service in Every Home [PDF]

Putting light-speed fiber service in 650,000 homes was taking too long. Then Bell Aliant cut manual labor by 25 percent while reducing engineering time by more than 30 percent. Here's how. [Read more](#) [PDF]



Maintain Service during Disasters

Disaster doesn't mean downed service. TM Forum tells operators when a threat looms, so they can reroute service from one critical asset to another.

[Read more](#)

Interactive Demos



Service Qualification

Begin Demo



Backhaul Optimization

Begin Demo



RF Planning Made Easy

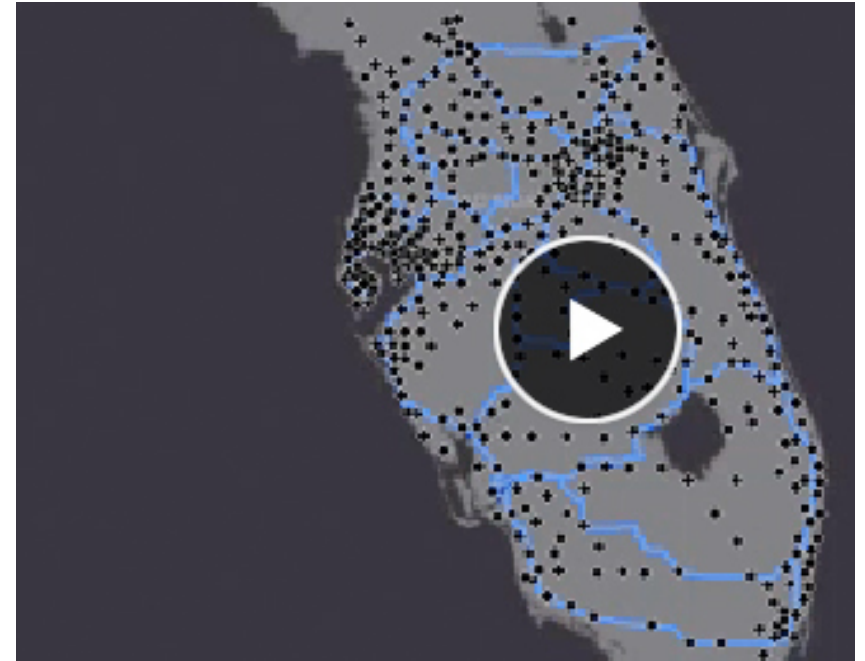
Begin Demo



Randy Frantz Talks to TM Forum After Esri Win

The Internet of Things (IoT) is all about context. Randy Frantz talks about how location-enabled devices will enhance our world.

Runtime: 1:43



Plan Your Backhaul Network

Let your engineers dive into deeper analysis for effective and highest-coverage routes.

Runtime: 56:05

Esri Community

Stay in touch with others in the telecommunications industry who are interested in GIS and location analytics. Join the conversation at [GeoNet](#).

[Join the Discussion](#)

 Connect with the Esri Telecommunications User Group on LinkedIn.



TM Forum Live

June 01 – 04, 2015
Nice, France



Summer CableLabs

August 02 – 05, 2015
Keystone, Colorado



FTTH Council Americas

June 29 – July 01, 2015
Anaheim, California

Partners & Solutions

[Explore Partner Directory](#) →

Esri is proud to team up with leading organizations in the telecommunications industry to bring the absolute right solution to you.



ArcGIS for Telecommunications lets you quickly deploy maps and apps that solve specific problems for cable, wireless, and wire-line.

[Read more](#)



Schneider Electric is a world leader in the development and implementation of ArcGIS software for utilities.

[Read more](#)



SSP has extensive experience in implementing industry-leading technology for electric, gas, water, and telecom utilities.

[Read more](#)



Enghouse has work in spatial design and maps solutions for telecommunications.

[Read more](#)

Have a Question?

Ask an Expert

An Esri representative is ready to help. Send us your question and we'll make sure to respond promptly. We have industry experts to help you learn more about how to solve problems and add value with Esri. We can also assist with product, pricing, and technical questions.

First name

Last name

E-mail

Phone

What do you need help with?

Organization

Twitter

Message

Send

Not sure who to contact? Call: 1.800.447.9778

Follow Us:       

Esri Home » Industries

Follow Us



Industry Info

- Industry Newsletters
- Esri Insider Blog
- Esri Nonprofit Program
- Enterprise License Agreements

Products

- ArcGIS
- Data
- Location Analytics
- All Esri Products

Services

- Professional Services
- Project Services
- Implementation Services
- Premium Support Services

Partners

- Search Partner Directory
- Hardware Promotions
- Learn About Partners

Understanding GIS

- What Is GIS?
- Map Book Gallery
- Video Library

[Contact Us](#) | [Privacy](#) | [Legal](#) | [Site Map](#)